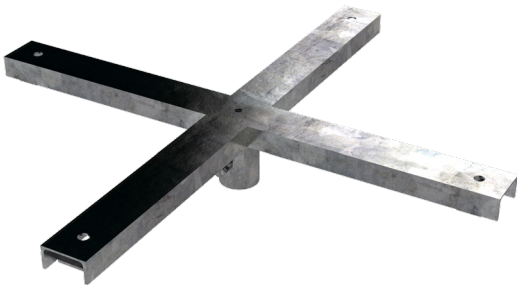
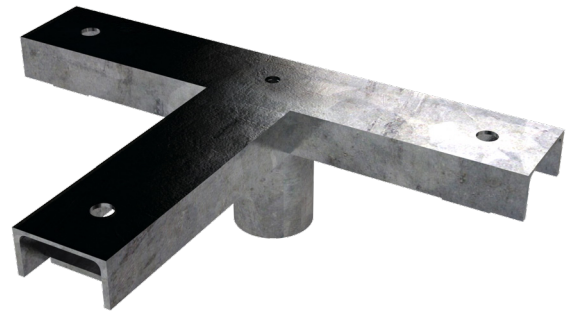


Floodlighting

Channel Headframes

Channel headframes are used to mount trunnion style luminaires to our range of floodlighting columns. Post top luminaires may also be fitted using either a 60mm or 76mm bolt on spigot. These headframes fit a $\varnothing 76$ mm column spigot.

All Urban Lighting Group columns and brackets are made from hot dip galvanized steel, and can be painted or powdercoated in your choice of colours.



Models

Model Code	Width (mm)	No. of luminaires	Weight (kg)
HFR-600S	600	1 to 3	7
HFR-1200S	1200	2 to 3	13
HFR-1500S	1500	2 to 3	15
HFR-600T	600 X 300	3	10
HFR-1200T	1200 X 350	3	16
HFR-1500T	1500 X 350	3	18
HFR-600Y	600	3	18
HFR-1200CROSS	1200 X 1200	4	22