

Floodlighting

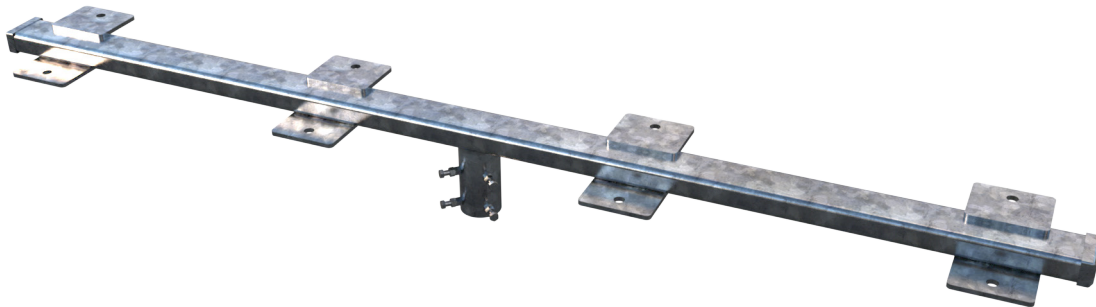
RHS Headframes

RHS headframes are used to mount larger trunnion style luminaires to our range of floodlighting columns. These headframes fit a Ø76mm column spigot, and have luminaire mounts arranged in an over and under configuration.

All Urban Lighting Group columns and brackets are made from hot dip galvanized steel, and can be painted or powdercoated in your choice of colours.

Options

- Powdercoated or 2 pack painted finish
- Custom sizes to suit your application



Models

| Model Code | No. of luminaires ¹² | Luminaire spacing (mm) | Width (mm) | Weight (kg) | Maximum luminaire width (mm) ³ | Maximum luminaire weight (kg) | Maximum luminaire ESA (m ²) |
|-----------------|---------------------------------|------------------------|------------|-------------|---|-------------------------------|---|
| HFR700-1.0S-4 | 4 | 700 | 1000 | 18 | 470 | 50 | 0.5 |
| HFR700-1.7S-5 | 5 | 700 | 1700 | 27 | 470 | 50 | 0.5 |
| HFR700-2.4S-8 | 8 | 700 | 2400 | 39 | 470 | 50 | 0.5 |
| HFR700-3.1S-9 | 9 | 700 | 3100 | 48 | 470 | 30 | 0.3 |
| HFR700-3.8S-12 | 12 | 700 | 3800 | 60 | 470 | 30 | 0.3 |
| HFR875-1.2S-4 | 4 | 875 | 1200 | 20 | 600 | 50 | 0.5 |
| HFR875-2.0S-5 | 5 | 875 | 2000 | 30 | 600 | 50 | 0.5 |
| HFR875-2.9S-7 | 7 | 875 | 2900 | 43 | 600 | 50 | 0.5 |
| HFR875-2.9S-8 | 8 | 875 | 2900 | 44 | 600 | 50 | 0.5 |
| HFR875-3.8S-9 | 9 | 875 | 3800 | 55 | 600 | 29 | 0.17 |
| HFR875-4.6S-12 | 12 | 875 | 4600 | 68 | 600 | 29 | 0.17 |
| HFR1060-1.4S-4 | 4 | 1060 | 1400 | 28 | 725 | 60 | 0.6 |
| HFR1060-2.4S-5 | 5 | 1060 | 2400 | 44 | 725 | 60 | 0.6 |
| HFR1060-3.5S-8 | 8 | 1060 | 3500 | 65 | 725 | 60 | 0.6 |
| HFR1060-4.5S-9 | 9 | 1060 | 4500 | 81 | 725 | 42.5 | 0.41 |
| HFR1060-5.6S-12 | 12 | 1060 | 5600 | 101 | 725 | 42.5 | 0.41 |

1 Cable access hole is Ø65mm, check for cable fitment prior to ordering.

2 5 way, 7 way and 9 way headframes have staggered mounting points at top and bottom, 4 way, 8 way and 12 way headframes have in line mountings.

3 Allows for aiming up to 45° left or right of the centerline.