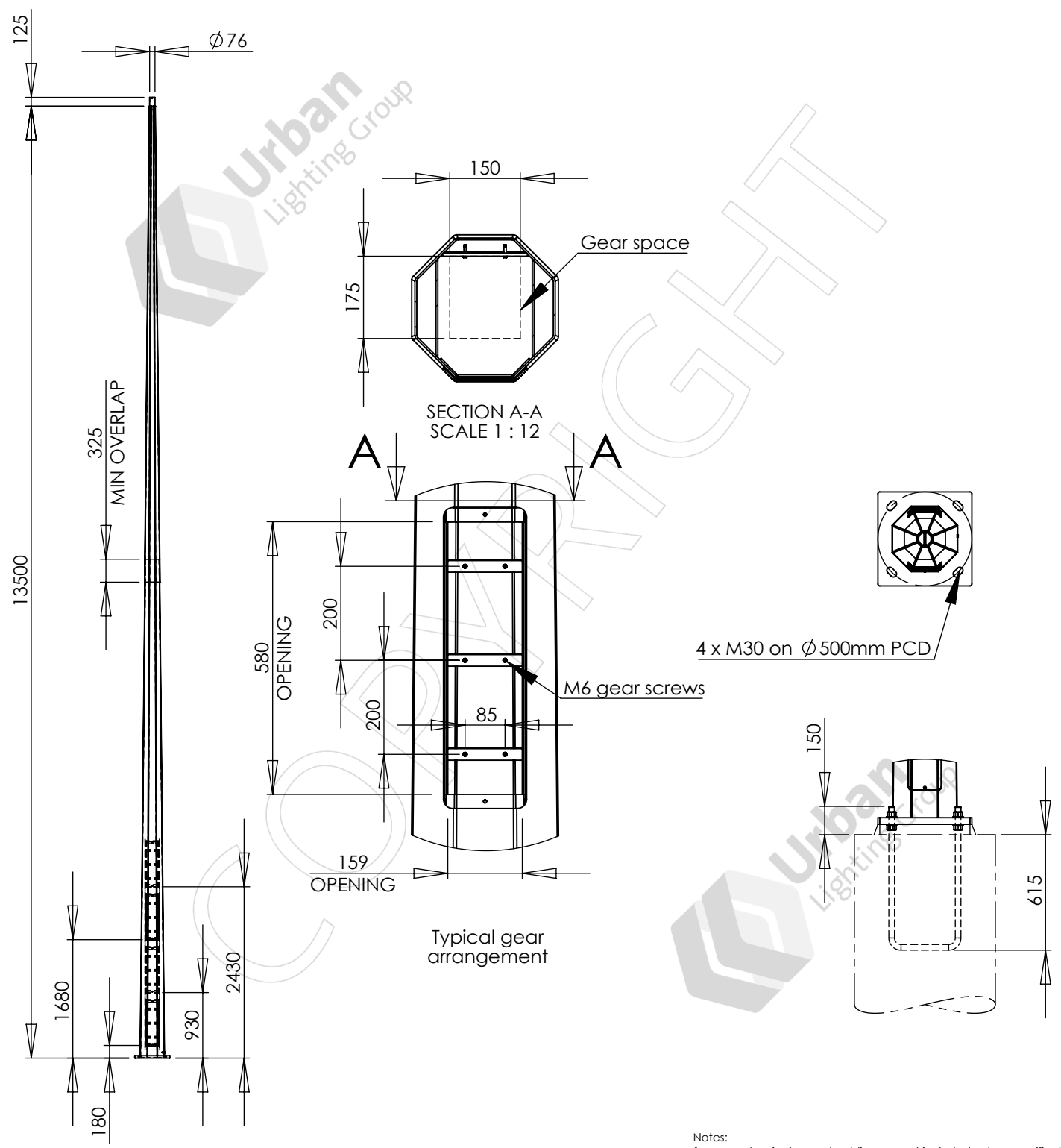


APPROVED BY: \_\_\_\_\_  
 DATE : \_\_\_\_\_



- Notes:
- Luminaires and cabling are not included unless specifically listed on the quotation.
  - See quotation for reinforcing cage and footing details

Designed and manufactured to:  
 AS 1798 Lighting poles and arms - Preferred dimensions  
 AS/NZS 1170.2 Structural design actions - Part 2: Wind actions  
 AS 4100 Steel structures  
 AS 4680 Hot-dip galvanized (zinc) coatings  
 See DS-3040 for other design standards

PARTS LIST			
ITEM NO.	PART NUMBER	DESCRIPTION	QTY.
1	FL13.5M2	13.5m TAPERED OCTAGONAL COLUMN	1
2	UBA-M30X500	U-BOLT ASSEMBLY, M30 X 500mm PCD	1

				FL13.5M2 column
				Colour:
1	Initial issue	2022-07-08	KG	Luminaires allowed for: 1.8 sq.m 180kg total load
Rev.	Description	Date	By	Wind loads: Region A, TC 2
				Ground loads: M* 58.5 kNm, V* 6.68 kN
				Weight: 380kg

**Urban**  
Lighting Group  
Innovative Streetscape Solutions

Urban Lighting Group Pty Ltd  
 ABN 74 638 077 684  
 28 National Drive, Hallam Victoria 3803  
 T 1300 088 719  
 email: sales@urbanlightinggroup.com.au

Drawing No. **GA-10408**  
 Revision **1**