

Floodlighting

Column assembly

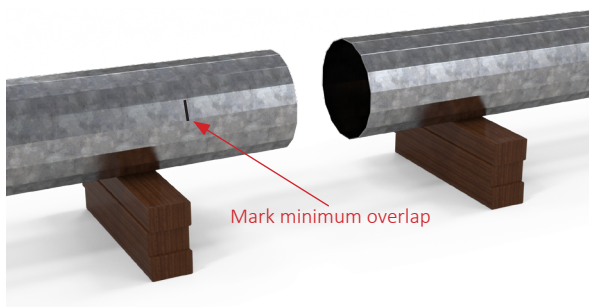
Where columns are supplied in sections, they must be correctly assembled before standing and bolting to the foundation. While this document illustrates a high mast column in 4 sections, the same principles can be applied to all sectional columns.

Tools and equipment

- Crane with capacity to lift the entire column, with enough height to stand the column.
- Wooden bearers for the end of each section, at least 300mm high.
- Tape measure and permanent marker
- 2 hand winches, 3200kg capacity.
- 2 heavy steel beams with fitting to attach the winches.



Arrange the column sections from the base to the tip, with bearers under the end of each section. If the ground is not level, you may need to add bearers to get the sections into a straight line. Make sure that the bearers are clear of the joints.

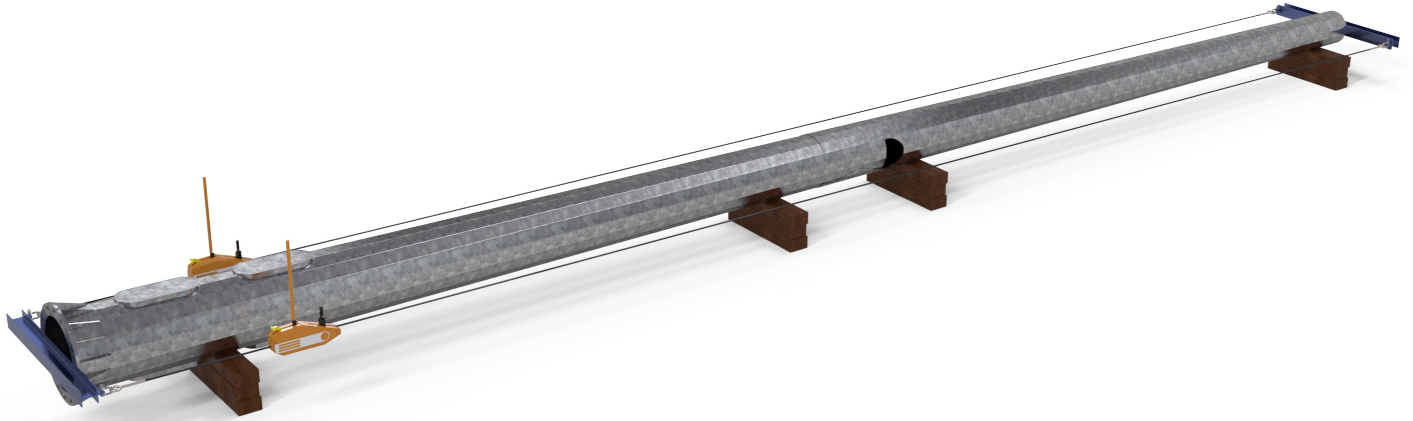


Mark on the lower section of each joint where the minimum overlap point is. This will help know when you've assembled the sections far enough. The minimum overlap is specified on the product drawings.

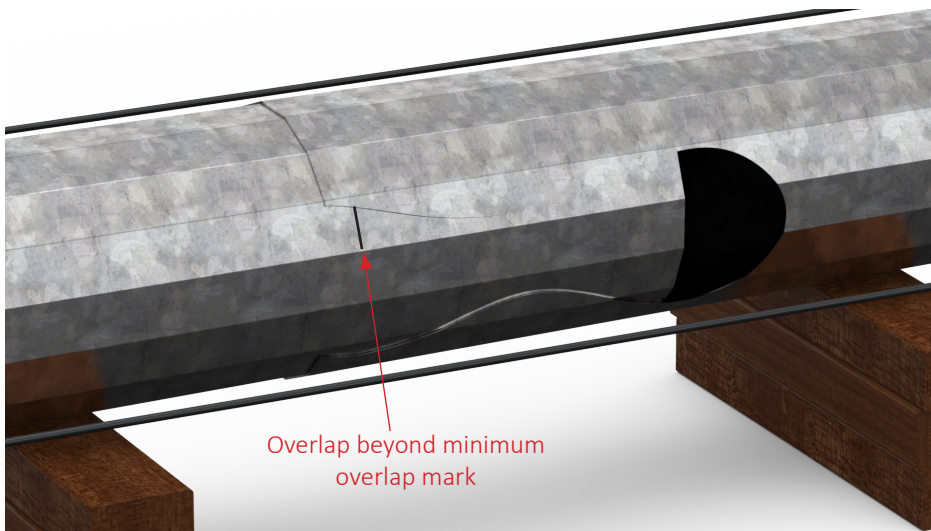
Starting from the lowest joint, use a sling and crane to slide the upper section onto the lower section. Make sure that the sections are properly aligned and level at this point.

Floodlighting

Column assembly



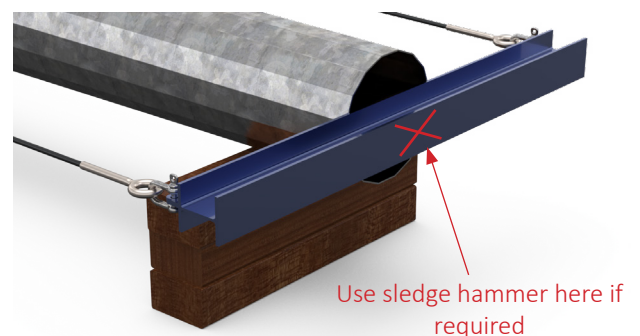
Set up 2 winches on either side of the column, with beams across the ends so that the winches will pull the column sections together evenly.



Pull the column sections together evenly until they are overlapped at least to the minimum overlap mark, and you cannot move them any further. Keep the sections aligned during this operation.

A sledge hammer may be used in combination with the winches to further overlap the column sections if required.

To protect the column section and permit the hammer to be used, a steel beam should be placed evenly over the top of the column section to protect the column. Extreme caution is advised when using a sledge hammer in this way.



Once this joint is complete, move on to the next joint until the column is completely assembled.