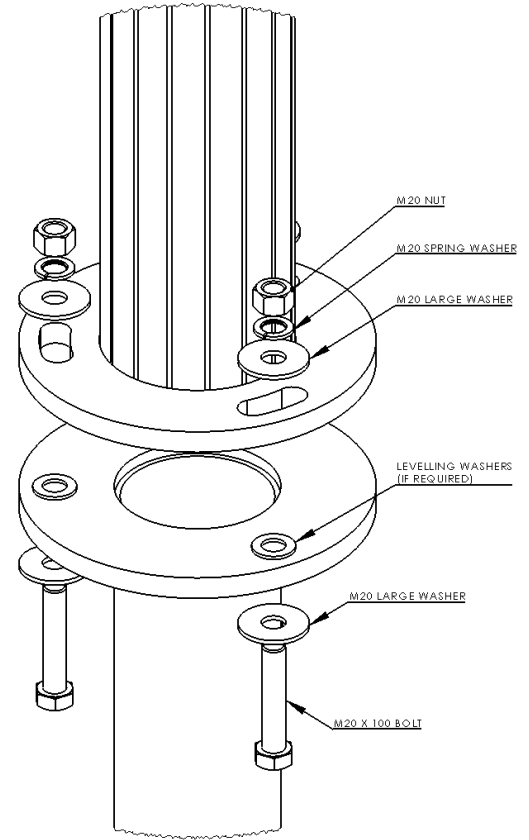
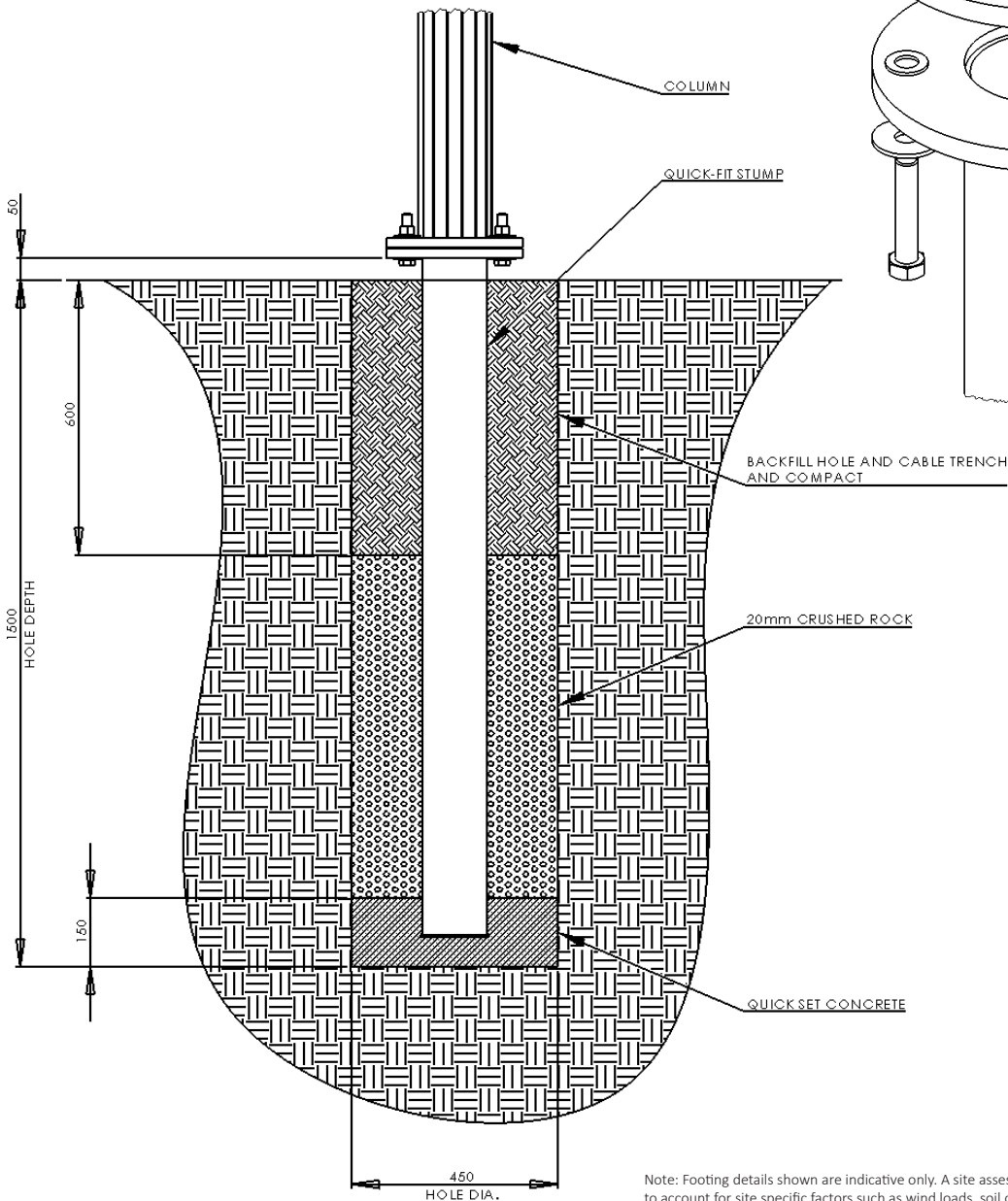


Footing Installation

Quick Fit Stump Installation

This is a guide to the installation of Quick Fit Stumps.

1. Bore a hole to the diameter and depth shown.
2. Pour a bag of quick-set concrete into the bottom of the hole.
3. Place the stump into the hole, leaving 50mm gap between the underside of the base plate and the finished ground level.
4. Check that the rotation of the stump is correct (see page 2).
5. Pour a second bag of quick-set concrete in to the hole.
6. Fill the hole to 600mm depth with 20mm crushed rock.
7. Fit the bolts and washers through the stump before filling the rest of the hole.
8. Backfill the rest of the hole and the service trench, and compact.
9. Locate the column over the stump, using levelling washers if required.
10. Fit the washers and nut to the bolts and tighten to 160Nm.



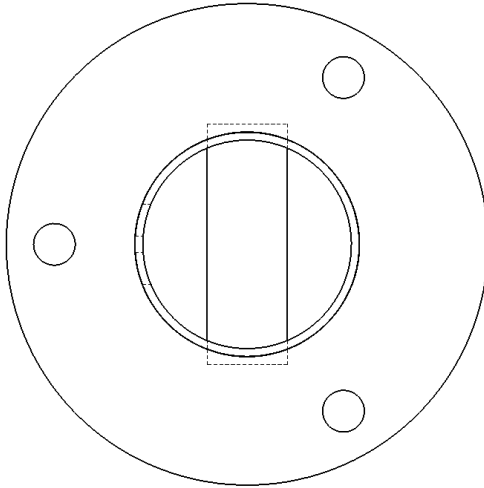
Note: Footing details shown are indicative only. A site assessment must be carried out by a qualified engineer in order to account for site specific factors such as wind loads, soil conditions and terrain category. This assessment is the responsibility of the installation contractor. Urban Lighting Group takes no responsibility for use of the footing details shown on this sheet.

Footing Installation

Quick Fit Stump Installation

Silhouette Column Orientation

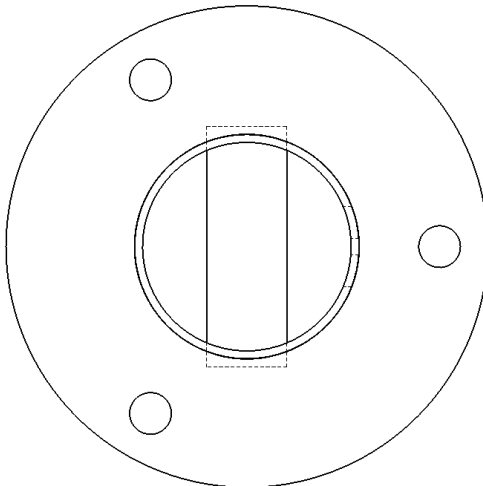
ROADWAY SIDE
Cable entry and service
trench this side



Column access door this
side

Curved Column Orientation

ROADWAY SIDE



Column access door,
Cable entry and service
trench this side

