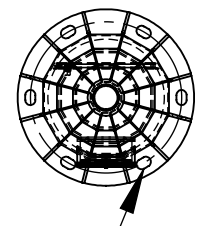
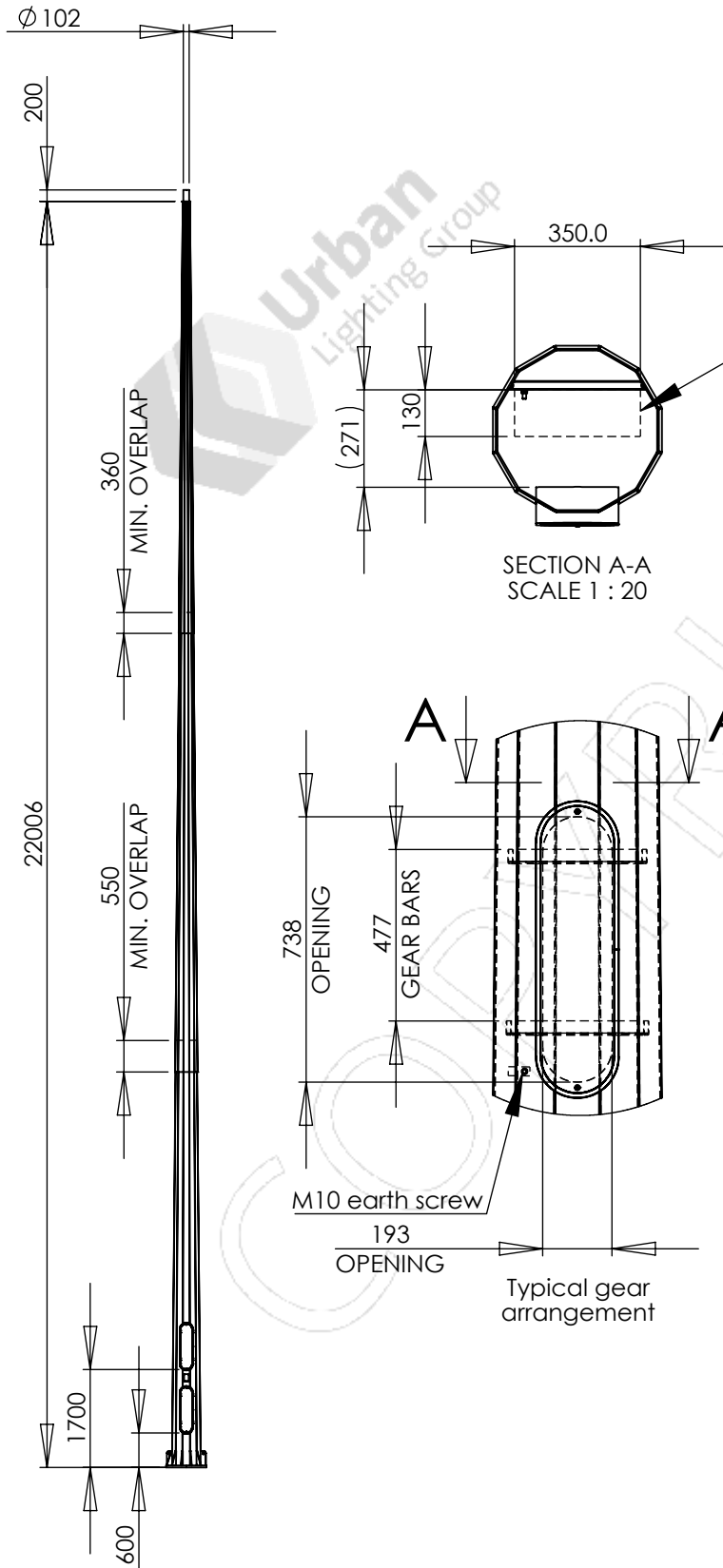
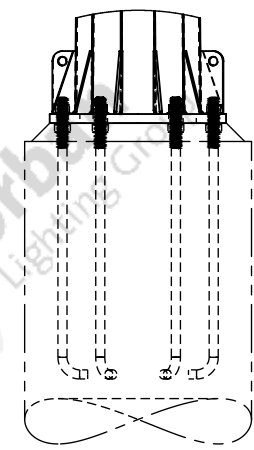


APPROVED BY: _____
 DATE : _____



6 x M36 on \varnothing 600mm PCD



- Notes:
- Luminaires and cabling are not included unless specifically listed on the quotation.
 - See quotation for reinforcing cage and footing details

Designed and manufactured to:
 AS 1798 Lighting poles and arms - Preferred dimensions
 AS/NZS 1170.2 Structural design actions - Part 2: Wind actions
 AS 4100 Steel structures
 AS 4680 Hot-dip galvanized (zinc) coatings
 See DS-3040 for other design standards

PARTS LIST					
ITEM NO.	PART NUMBER	DESCRIPTION	DRAWING NO.	REV.	QTY.
1	FL22-D3-102500	22.0m HIGH MAST COLUMN	ADL-21177	2	1
2	FBA-6XM36X600	FOUNDATION BOLT ASSEMBLY, 6 x M36 ON 600mm PCD			1

REV.	DESCRIPTION	DATE	BY	APP.	FL22-D3-102500 column
1	INITIAL ISSUE	2023-07-17	KG	ME	
2	COLUMN UPDATED	2023-07-20	KG	ME	

Urban Lighting Group
 Urban Lighting Group Pty Ltd
 ABN 74 638 077 684
 28 National Drive, Hallam Victoria 3803
 T 1300 088 719
 email: sales@urbanlightinggroup.com.au

Colour:
 Luminaires allowed for: 2.0m² 250kg maximum load
 Wind loads: Region A, TC 2 Ground loads: M* 147 kNm, V* 10.7 kN
 Weight: 936kg DO NOT SCALE Sheet 1 of 1 A4
 Drawing No. GA-10721
 Revision 2