

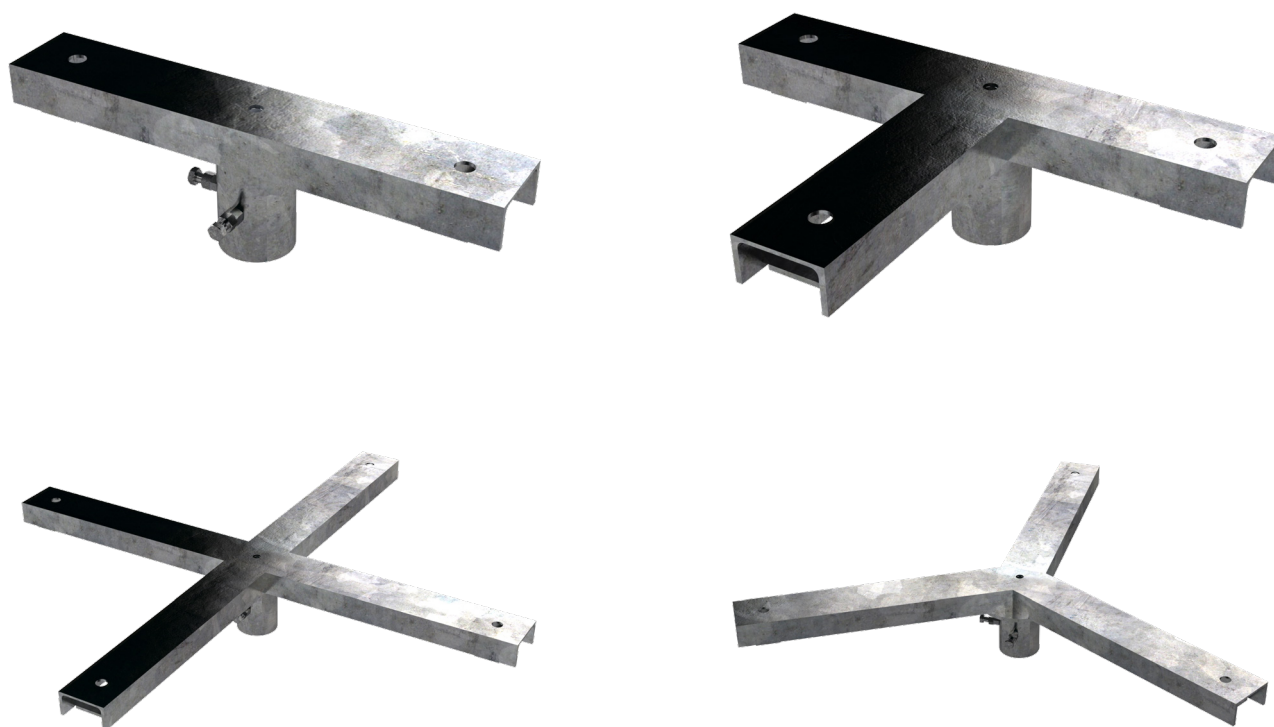
# Floodlighting

## Channel Headframes

Channel headframes are used to mount trunnion style luminaires to our range of floodlighting columns. Post top luminaires may also be fitted using either a 60mm or 76mm bolt on spigot. These headframes fit a Ø76mm column spigot.

Mounting holes are Ø22mm diameter, and there is a center hole with an M16 thread for additional luminaire mounting.

All Urban Lighting Group columns and brackets are made from hot dip galvanized steel, and can be painted or powdercoated in your choice of colours.



## Models

Model Code	Width	No. of luminaires	Luminaire Weight (ea)	Luminaire ESA (ea)	Headframe Weight
HC-600S	600mm	3	30kg	0.30m <sup>2</sup>	5kg
HC-600T	600mm x 400mm	4	30kg	0.30m <sup>2</sup>	7kg
HC-600Y	600mm (3 arms)	4	35kg	0.35m <sup>2</sup>	16kg
HC-1000S	1000mm	3	35kg	0.35m <sup>2</sup>	9kg
HC-1200S	1200mm	3	35kg	0.35m <sup>2</sup>	11kg
HC-1200T	1200mm x 400mm	4	35kg	0.35m <sup>2</sup>	14kg
HC-1200CROSS	1200mm x 1200mm	5	35kg	0.35m <sup>2</sup>	19kg
HC-1500S	1500mm	3	35kg	0.35m <sup>2</sup>	15kg
HC-1500T	1500mm x 450mm	4	35kg	0.35m <sup>2</sup>	18kg
HC-1800S	1800mm	3	35kg	0.35m <sup>2</sup>	18kg
HC-2000S	2000mm	3	35kg	0.35m <sup>2</sup>	20kg